

Circle, Triangle, Square

The video game being referenced is Kingdom Hearts, a franchise produced by Square Enix and Disney. Kingdom Hearts takes place in the worlds of several Disney movies; the notes here indicate other Disney movies that could plausibly be adapted. The movies are clued in alphabetical order by title:

- *The Adventures of Ichabod and Mr. Toad*
- *Bedknobs and Broomsticks*
- *The Emperor's New Groove*
- *Enchanted*
- *Fantasia 2000*
- *The Haunted Mansion*
- *Lady and the Tramp*
- *The Lone Ranger*
- *The Love Bug*
- *Mary Poppins*
- *Moana*
- *Monsters, Inc.*
- *Return to Oz*
- *Song of the South*

These movies are then put into the blanks on the last page. The hearts represent the central one or two letters of each word in the title, and are given below as a solving aid. This allows the answers to be uniquely entered into the blanks. When that is done, the letters in the green triangles spell AVERAGE down the left-hand side, and CIRCLES on the right. Taking the “average” of the pairs of letters in the circles (that is, the letter halfway between the two) in each row spells the answer, **HELPFUL**.

Hollywood Squares (Solution)

There are three stages to solving this puzzle.

Stage 1: Determining where each of the panelists is located in the grid. From the first round:

- **Heinz Doofenshmirtz** is in the center square, as explicitly stated.
- **Carmen Sandiego** is stated to be **Molly Weasley**'s downstairs neighbor. This means that Carmen is in the bottom two rows in either the left or right column, and Molly is in the square above her.
- **Xena** was chosen to block three-in-a-row with Heinz and Carmen, so Xena is directly opposite Carmen's square.
- **Ralph Wiggum** was chosen for a block, presumably with **Apollo Creed** and Heinz. We'll get back to that.
- **Ozma** is stated to be Ralph's left-hand neighbor. This means that Ozma is in the left two columns in either the top or bottom row, and Ralph is to her right.
- **Trillian** was chosen to block after Ozma was chosen.
- **Oscar the Grouch** is the remaining square.

From the second round:

- **Apollo Creed** is Trillian's left-hand neighbor. This means that Apollo is in the left two columns in either the top or bottom row, and Trillian is to his right.
- **Ralph Wiggum** was chosen to block after Apollo Creed. So Ralph and Apollo are in opposite squares.
- **Oscar the Grouch** was stated to be Ralph's right-hand neighbor. So Ralph has neighbors to the left and right, which means Ralph must be in the center column, in either the top or bottom row.
- This means Ozma is in the left-hand column and Oscar the Grouch is in the right-hand column, both in Ralph's row. Also, Apollo Creed is in the center column in the row opposite Ralph, and Trillian is to the right of Apollo.
- **Molly Weasley** was chosen to block after Oscar the Grouch. Based on the above arrangement, the potential three-in-a-row is with Oscar and Heinz, so Molly must be opposite Heinz.
- This means Ozma is in the left-hand column in either the top or bottom row. But from the first round, we know that Molly was in one of the top two rows, so Molly must be in the top-left square, with **Apollo Creed** and **Trillian** with her in the top row. This means that **Carmen Sandiego** must be in the middle-left square, and **Xena** is in the middle-right square, while **Ozma**, **Ralph Wiggum**, and **Oscar the Grouch** are in the bottom row.

That gives the following arrangement:

Molly Weasley	Apollo Creed	Trillian
Carmen Sandiego	Heinz Doofenshmirtz	Xena
Ozma	Ralph Wiggum	Oscar the Grouch

Note that the panelists' initials, in grid order, spell MATCH X OR O. This will come into play in the next stage of solving.

Hollywood Squares (Solution)

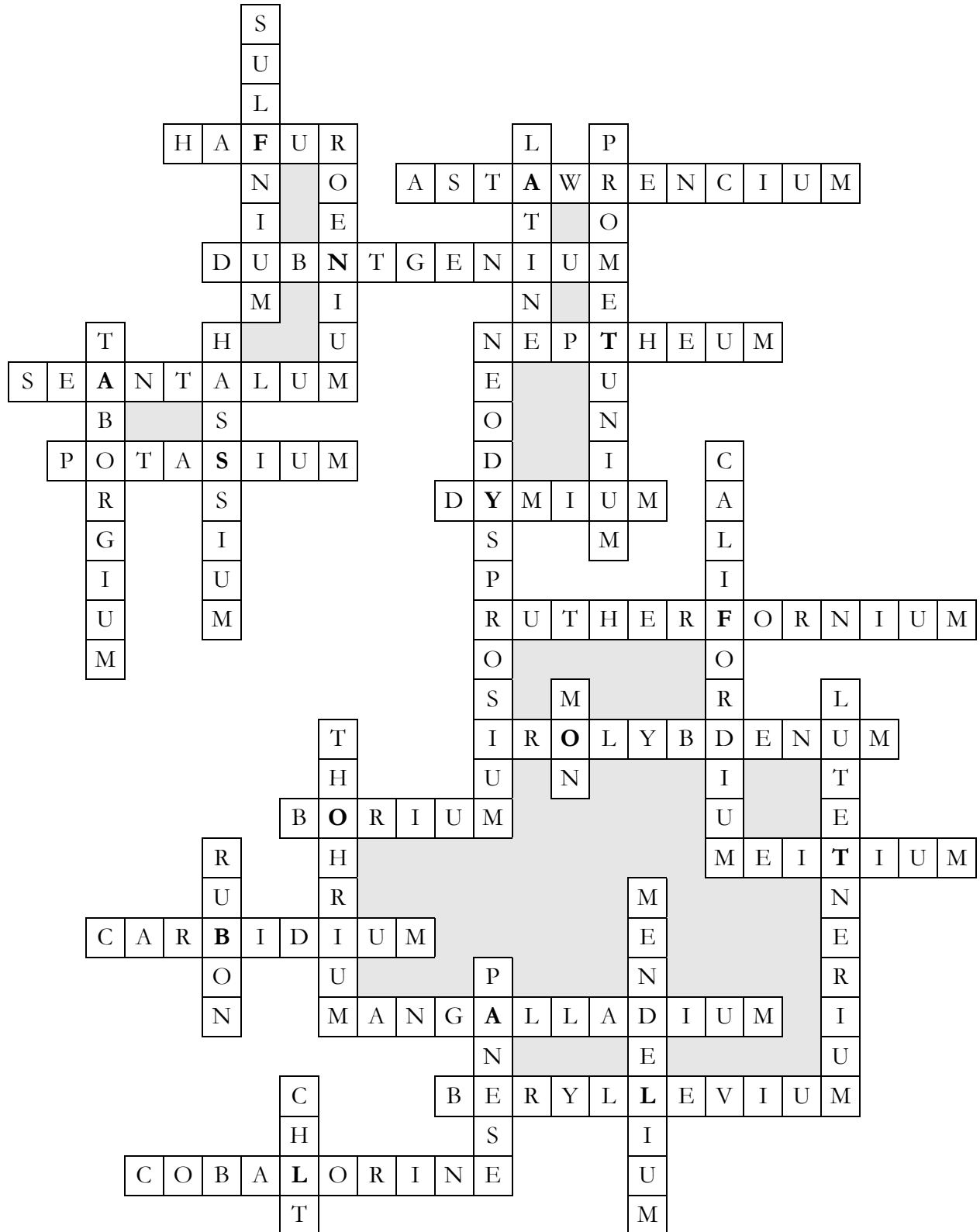
Stage 2: Solvers may notice the phrase MATCH X OR O from the panelists' initials above, but this might not be necessary to get the aha for the second stage. Solvers should consider the responses given by the panelists, which are all (verifiably) correct. Each response has the same number of letters as the panelist's full name. Additionally, if Xavier has chosen that panelist, their response has a single X, and if Ophelia chose that panelist, their response has a single O (sometimes Xavier's response will also have an O or Ophelia's response will have an X, but solvers should realize that this is not consistent). The panelists and their responses are given for each round below:

X:heinzdoofenshmirtz	O:heinzdoofenshmirtz
X:pharosofalexandria	O:defenderOfthefaith
O:mollyweasley	X:trillian
O:halfmarathon	X:oXytocin
X:carmensandiego	O:apollocreed
X:proximatecause	O:ratatouille
O:xena	X:ralphwiggum
O:hugo	X:doublehelix
X:apollocreed	O:oscarthegrouch
X:exoskeleton	O:transmogrifier
O:ralphwiggum	X:mollyweasley
O:hippocampus	X:ambidextrous
X:ozma	O:carmensandiego
X:Xray	O:deadseascrolls
O:trillian	X:xena
O:bordeaux	X:taxi
X:oscarthegrouch	O:ozma
X:masondixonline	O:gold

Looking at the letters in the panelists' names corresponding to X or O in the responses, the first round letters spell SEMAPHORE and the second round letters spell FROM HEINZ. This is a clue for how to extract an answer in the third stage. Note that Heinz is never the Secret Square, so each choice for a Secret Square can be interpreted as a flag in one of the 8 positions used in semaphore. Semaphore requires two flags for each letter, and while there is more than one way to pair up Secret Squares for this stage, a reasonable interpretation is to pair up the Secret Squares for the first turn each round, the second turn, and so far. Doing this yields pairs of flags that spell the answer, **GARFUNKEL**.

Pro Bending (solution)

The finished grid is shown below. The letters where two entries bend spell the answer, **FANTASY FOOTBALL**.



Square Route (solution)

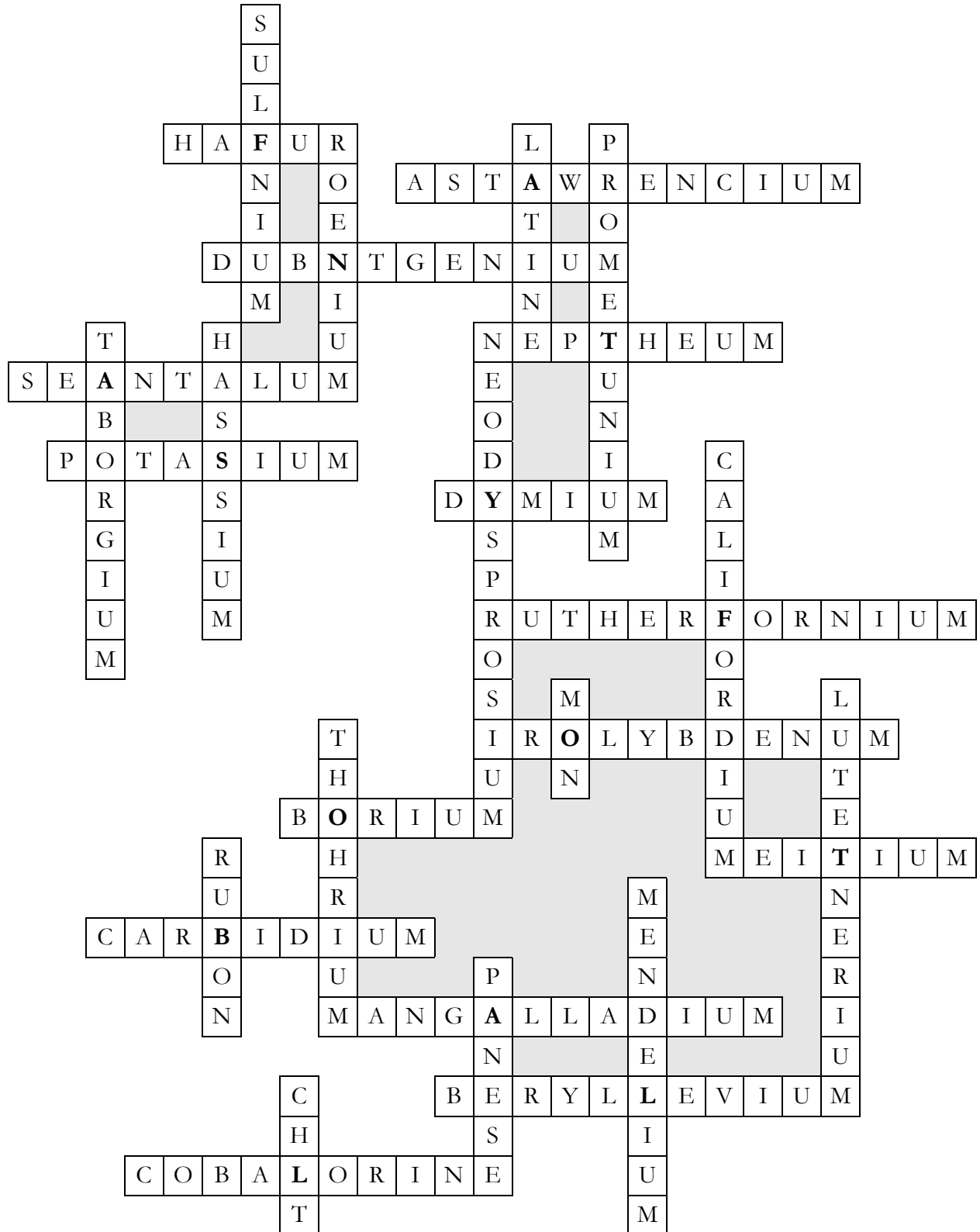
Solvers must explore the Inman Square neighborhood, physically or virtually, to find the names of the people honored with their own squares at various intersections. The names can be entered into the blanks uniquely, which are ordered alphabetically by first name:

C A R L O S — — — E — O L I V E I R A
 3 6 2 4 1
 C H R I S T I A N G I R A R D
 2 4 1 5
 F R E D & L I L L C A P P U C C I
 3 4 1 2
 G A E T A N O " G U Y " S C I A N D R A
 2 4 6 1 5 7
 H U M B E R T O & M A R I A B E N T O
 4 1 2
 M O N I C A C . M C C L A R E N
 3 4 2 5
 J O S E P H " S O N N Y " M E D E I R O S S R .
 5 1 2 3
 L E S L I E L . " B U N N Y " W O O D S R .
 6 5 4 2 3
 R O B E R T M A S T E R S O N
 6 7 1 3 5 2
 R O G E R " R A M " R E D D I C K
 3 1 4 2

The letters in the numbered spaces for each set of blanks can be order to make an incomplete word, with one letter missing: RELI?S, GR?ND, AUDI?, CA?TION, BO?B, ?LONE, SMI?E, ?ODULE, TRA?TOR, and ADOR?. There are two letters that could complete each incomplete word: C/E, A/I, O/T, P/U, O/M, A/C, L/T, M/N, C/I, and E/N. Arrange the letter pairs according to the numbered squares on the map, and then use the greater-than/less-than signs in the second grid to place the letters in each pair into the top or bottom blank, to spell the answer, **IMMACULATE CONCEPTION**.

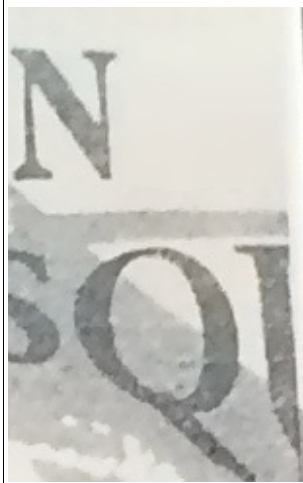
Pro Bending (solution)

The finished grid is shown below. The letters where two entries bend spell the answer, **FANTASY FOOTBALL**.



Completing the Square (solution)

Each image is an excerpt from the Central Square mural on one wall of Graffiti Alley, with one letter edited out. The letters are in alphabetical order on the page; order by their position in the mural from left to right to spell the answer, **GUTEN MORGEN**.



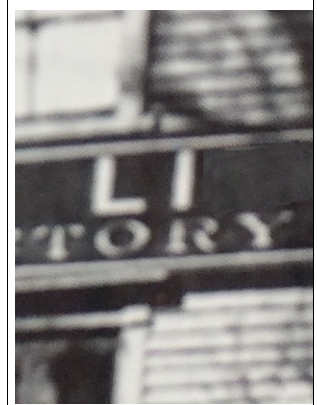
E



E



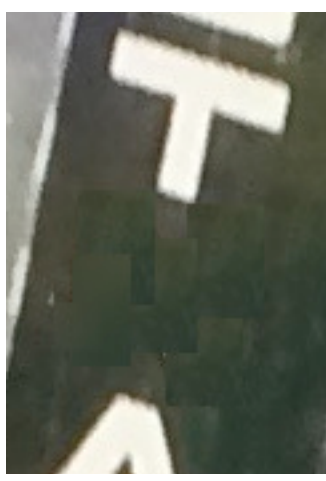
G



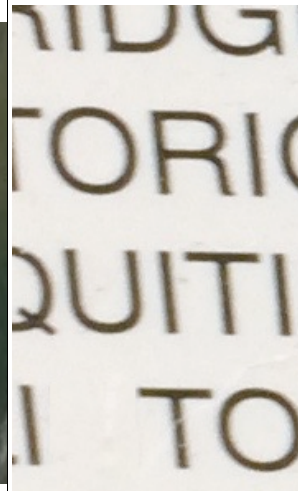
G



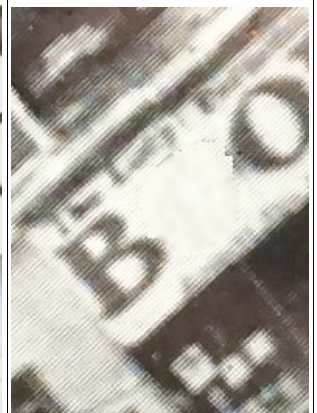
M



N



N



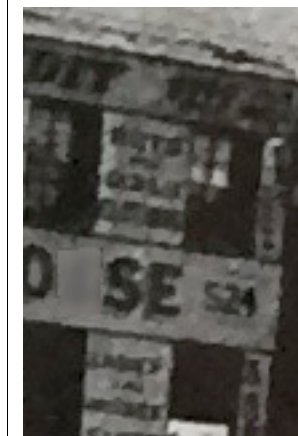
O



R



T



U